

Certificate in

Crime & Intelligence Analysis

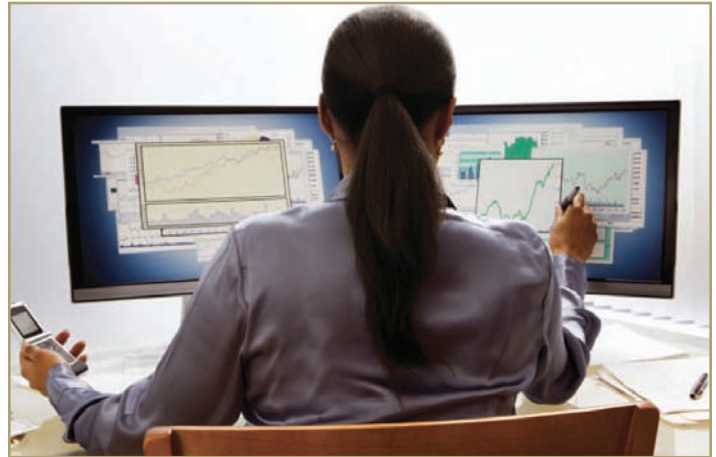
PROFESSIONAL DEVELOPMENT

MASTER THE TECHNIQUES TO SOLVE REAL-WORLD CRIME PROBLEMS: BECOME A NATIONALLY CERTIFIED CRIME & INTELLIGENCE ANALYST

Participants in the Crime & Intelligence Analysis certificate program receive practical instruction in crime analysis, criminal investigative analysis, organized crime and intelligence analysis, law enforcement research and statistical methods. Courses focus on the analysis of crimes that most frequently come to the attention of field and investigative officers (murder, rape, robbery, burglary, theft) and those of interest to intelligence officers ("victimless" crimes, organized crime activities, smuggling, child pornography rings, money laundering schemes).

Graduates will master how to:

- Identify and correctly define crime problems and patterns
- Collect data, subject it to statistical tests, develop and test hypotheses
- Conceptualize and convert raw data into valid criminal intelligence information
- Create association matrices and prepare telephone toll analysis, hierarchical analysis, visual investigation analysis, link analysis, and financial analysis
- Develop crime/suspect and suspect/crime correlations; develop target profile analysis
- Articulate crime problems to individuals and groups through written reports, charts and graphs



Upon completion of the program, graduates will receive a Cal State Fullerton certificate as well as a certificate from the California Department of Justice which designates them as a national certified Crime and Intelligence Analyst.



ELIGIBILITY

Students are free to complete courses on an individual basis if they choose but certificate candidates are expected to complete all of the required courses in the program.

Certificate Requirements

To be eligible to earn the certificate, students must meet and document the following requirements:

- Completion of an Introduction to Criminal Justice and a Criminal Law class from an accredited program of study or a letter of verification of such working knowledge from an employer/instructor.
- Knowledge of basic computer applications and skills, such as word processing, spreadsheet documents, and data entry, documented through a program of study or letter of verification from an employer.
- Completion of the 400-hour Practicum in Crime and Intelligence Analysis along with all the required courses.

Application for the Certificate

All certificate candidates need to complete the application form and submit with a \$50 non-refundable application fee, transcripts and/or appropriate supporting documents to CSUF Extended Education.

For more information www.csufextension.org/Classes/Certificate or contact Kristyn Hursh at 657.278.7427 or khursh@fullerton.edu

Cal State Fullerton
university extended education
www.csufextension.org

THE CLASSES

CSUF credit classes that meet certificate prerequisite requirements

Students may enroll in the degree credit classes listed below, if needed, through Open University enrollment in Extended Education. Please consult the university's class schedule for information about the schedule and availability of these classes. Open University registration forms are available through the Extended Education Registration Office.

INTRODUCTION TO CRIMINAL JUSTICE

CRJU 300 (3 Units)

A study of the underlying ideological issues confronting America's system of criminal justice, with an emphasis on key concepts in conflict (law and order, rehabilitation vs. retribution, etc.).

CRIMINAL LAW: SUBSTANTIVE

CRJU 310A (3 Units)

The general doctrines of criminal liability in the United States and the classification of crimes against persons, property and the public welfare. The concept of governmental sanction of the conduct of the individual.

REQUIRED CLASSES

BASIC ELEMENTS OF CRIMINAL INTELLIGENCE

(1.6 CEUs/16 hours)

Prerequisite: None. Learn how to collect and analyze data associated with "victimless" crimes, or crimes against society. Learn how to recognize and identify organized crime activities, develop information sources, and be familiar with the ethical and legal requirements attached to the use of intelligence information.

CRIMINAL INTELLIGENCE ANALYSIS

(2.4 CEUs/24 hours)

Prerequisite: Basic Elements of Criminal Intelligence. Building on the foundation of the previous class, the focus will be on actual techniques used in analyzing criminal activities. Learn how to convert raw data into valid intelligence information – learn to prepare association matrices, telephone toll analyses, visual investigative analyses, link analyses and financial analyses. Exposure to several intelligence analysis computer software programs is included.

CRIME ANALYSIS DATA ANALYSIS

(1.2 CEUs/12 hours)

Prerequisite: None. This class introduces students to the field of Crime Analysis including the five steps in the data analysis process: data collection, collation, analysis, dissemination and feedback/evaluation. Learn to collect general and specific crime data, create data tracking matrices, use data to determine the emergence of new crime problems, and prepare basic charts, graphs, and crime and intelligence analysis reports along with techniques to properly communicate findings to law enforcement agencies.

CRIME ANALYSIS APPLICATIONS

(2.4 CEUs/24 hours)

Prerequisite: Crime Analysis Data Analysis. This class will help you learn to identify and differentiate between crime patterns, series, and trends, and to use the data to forecast future crime occurrences. Includes exposure to the three types of crime analysis (tactical, strategic and administrative), and the eight functions of a crime analysis unit.

CRIMINAL INVESTIGATIVE ANALYSIS I

(1.2 CEUs/12 hours)

Prerequisite: None. Discuss the inner-workings of the criminal mind, the motivating factors that lead people to commit criminal acts, and the methods these criminals use to plan and execute crimes. This class focuses on the typology of crime, patterns and motives of crime, profiles and the psychological make-up of those who engage in illegal activities.

CRIMINAL INVESTIGATIVE ANALYSIS II

(2.4 CEUs/24 hours)

Prerequisite: Criminal Investigative Analysis I. Learn to conduct crime scene analysis, and "read" the clues which may lead to the discovery of serial, "copy cat," and thrill-seeker killers. Understand how to identify sexual assault and sexual homicide cases. Explore the differences in personalities among deviants, the habit formation process, and the role of socialization in the development of the sadistic criminal – with an emphasis on the analysis of crimes committed primarily against women and children.

LAW ENFORCEMENT RESEARCH & STATISTICAL METHODS

(3.6 CEUs/36 hours)

Prerequisite: Crime Analysis Applications. Get acquainted with the basic research and statistical principles used in crime analysis. Learn the concepts involved in research design, content analysis, sampling, survey techniques and statistical methods. Learn how to conduct research and write conclusions using commonly accepted research standards.

COMPUTER APPLICATIONS FOR CRIME & INTELLIGENCE ANALYSIS

(4 CEUs/40 hours)

Prerequisite: Crime Analysis Applications. Get a realistic view of the day-to-day work of a crime analyst in this hands-on class. Receive basic instruction on the use of the computer in the crime and intelligence analysis field and become familiar with the current software available to crime analysts. Geographic information systems and their application in crime analysis will also be introduced.

PRACTICUM IN CRIME & INTELLIGENCE ANALYSIS

Prerequisite: Satisfactory completion of two or more of the certificate classes. Gain valuable hands-on work experience and develop marketable skills in a 400-hour supervised practicum in a law enforcement crime and/or intelligence unit. Completion of the practicum is required to qualify for a certificate.

Prior to starting your practicum, call 657.278.2611 and request a copy of the requirements and the application. Register for the practicum in the semester you anticipate completing your hours. Previous or current work experience in a law enforcement agency that can be verified by a current or previous supervisor may be acceptable to meet the practicum requirement. Note: successful completion of Computer Applications in Crime & Intelligence Analysis allows you to apply 40 hours toward the practicum.

For more information www.csufextension.org/Classes/Certificate
or contact Kristyn Hursh at 657.278.7427 or khursh@fullerton.edu